

2011 Grand Banks 76 Aleutian RP



Main Info

Price €2100000	Length 22.36	Built 2011	Model 76 Aleutian RP
Location Corfu, Greece	Accomodation 4	Draft 2.74	VAT Paid
Crew Cabin 2	Beam 6.05		

Overview

GRAND BANKS 76 ALEUTIAN

CA - VAT PAID - Keen Seller - Top Condition

The reworking of the design of the 72' ALEUTIAN began in October 2009 and was completed in July 2011, assisted by Architect Bertoni. One of the primary objectives was not to create a one-off but to work with a tried and tested model, analyzing and optimizing existing vessels by introducing many improvements. The result is a solid and reliable yacht with a line that could only have been traced out by Tom Fexas and a modern, comfortable, and practical layout built in keeping with the tradition and quality of Grand Banks. Over a good 14 months, a surveyor checked the yacht daily during her meticulous construction.

The boat features numerous improvements, including:

- Forward area with comfortable settees
- Large, partially covered flybridge measuring over 40 m
- Much larger salon
- Cockpit with a table for 12 people
- Crew area, separate even during the day
- Day toilet on the main deck
- Redesigned and larger master cabin
- Two high-capacity engines (C18 ACERT) were chosen with 873 HP to be able to travel continuously for 1500 miles at a speed of 10 knots, as well as to complete rapid transfers at 18 knots. Every detail of Dolcenera has been carefully thought out for comfortable, reliable, and flexible long-range travel.

Please Contact Us for More Info or to Arrange a Viewing.

Specifications

Engine 1

- 2011 Caterpillar C18
- Fuel Type: Diesel
- Power: 1746 hp

Engine 2

- 2011 Caterpillar C18
- Fuel Type: Diesel
- Power: 1746 hp

Dimensions

- LOA: 22 m 36 cm
- Beam: 6 m 5 cm
- Max Draft: 2 m 74 cm

Speed

- Cruising Speed: 10 kn
- Max Speed: 18 kn

Additional Equipment

- Crane

- 6 Cabins
- 6 Heads

Generators & Electrical Equipment

Generators:

- Cummin Onan Marine Generator 6200 hr
- Cummin Onan Marine Generator 6100 hr

Electrical Equipment

- A/C Throughout The Yacht
- Speakers Throughout The Yacht
- MasterVolt Charger
- Shore Power Inlet
- Miele Washing Machine
- Miele Clothes Dryer

Navigation & Communication Equipment

- Compass
- Raymarine Chart/Plotter
- Raymarine GPS
- Raymarine Autopilot
- 2 x Catterpillar Display Unit
- VHF
- Raymarine Radar

Domestic Equipment

- Working/Studying Area
- Storage Area With Washing Machines

Saloon

- 2 x Sofa For 5 Persons Each
- Coffee Table
- Dining Table with 3 x chairs And Sofa for 3 Persons
- Wine Fridge
- DayHead

Galley

- Coffee Machine
- Sink
- Electric Oven
- Fridge
- Freezer
- Refrigerator

Accommodation

Guest Cabins

- Master Cabin With King-Size Bed and En-Suite Facilities
- VIP Cabin With Queen-Size Bed and En-Suite Facilities

- 2 x Guest Cabins With En-Suite Facilities

Crew Cabins

- 1 x Captain's Cabin With En-suite Facilities
- 1 x Crew Cabin With 2 x Bedrooms and En-Suite Facilities

Deck Equipment

Flybridge

- Hard Top
- Crane
- Fully Equipped Helm Station
- 2 x Coffee Table
- L-Shape Sitting Area
- Tender Lift
- 2 x Fwd Sunbeds Cushions

Deck Equipment

- Cockpit Dining Table
- Side Storage Area
- Cockpit Cushions
- Cockpit Speakers

Works/Upgrades

- New Kitchen: Fully upgraded with stainless steel (2022).
- Electronics/Nav: All replaced (2023).

- Furniture/Fabrics: Fully updated in cabins and salons (2022)).
- Engine Room Overhaul (2025)
- New Batteries (2025)
- New Stereo/Wi-Fi (2025)
- Teak Furniture (2024)
- Annual Service: Comprehensive Service of Engines, Generators, and Systems.
- Diesel Tank Cleaning (2024)



۱۶۱





۱۶۱













۱۶۱





۱۶۱























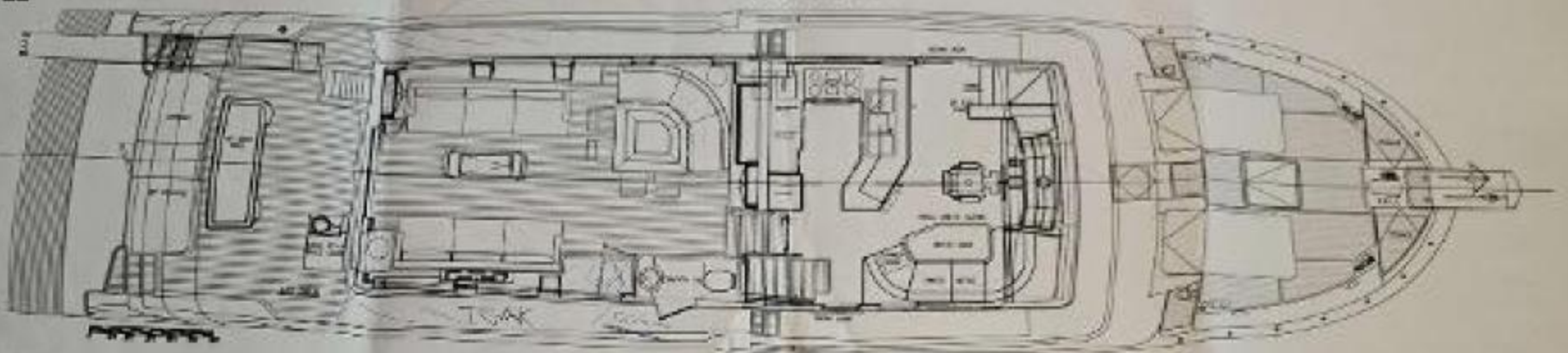
۱۶۱







GRAND BANKS TEST - PROPOSED MACHINERY ARRANGEMENT
(FOR MR. CAPTAIN)



PROPOSED LAYOUT ARRANGEMENT
(FOR MR. CAPTAIN)

